



18 Brunswick Place

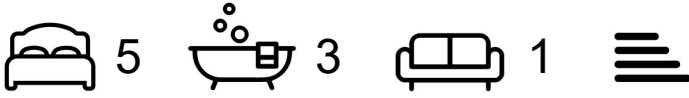
, Heckmondwike, WF16 0LD

A five bedroom mid-townhouse set over three floors, offering spacious and flexible accommodation, ideal for a growing family. Built in 2013, the property is situated on a popular modern development, conveniently located within walking distance of local amenities and well-regarded schools. The house is well presented throughout and offers the next owners the opportunity to update and personalise it to suit their own tastes. Externally, the property benefits from off-road parking and a seating area to the front. To the rear is a good-sized enclosed garden, providing a private outdoor space for relaxing or entertaining.

£259,950

18 Brunswick Place

, Heckmondwike, WF16 0LD



- FIVE BEDROOM TOWNHOUSE
- OFFERING SPACIOUS & FLEXIBLE ACCOMMODATION SET OVER THREE FLOORS
- CLOSE TO LOCAL AMENITIES INCLUDING SCHOOLS
- MOTORWAY NETWORKS & PUBLIC TRANSPORT LINKS CLOSEBY
- LARGE, ENCLOSED REAR GARDEN & SEATING AREA AT THE FRONT
- DRIVEWAY PROVIDES OFF ROAD PARKING

Living Room

13'3" x 12'9" (4.05 x 3.9)

Utility

7'0" x 2'11" (2.15 x 0.9)

WC

5'10" x 3'5" (1.8 x 1.05)

Dining Kitchen

16'4" x 10'5" (5 x 3.2)

Master Bedroom

15'8" x 10'9" (4.8 x 3.3)

Ensuite

9'10" x 3'11" (3 x 1.2)

Bedroom Two

15'8" x 13'1" (4.8 x 4)

Bathroom

6'10" x 5'6" (2.1 x 1.7)

Bedroom Three

15'8" x 10'9" (4.8 x 3.3)

Ensuite

5'6" x 5'2" (1.7 x 1.6)

Bedroom Four

9'10" x 8'2" (3 x 2.5)

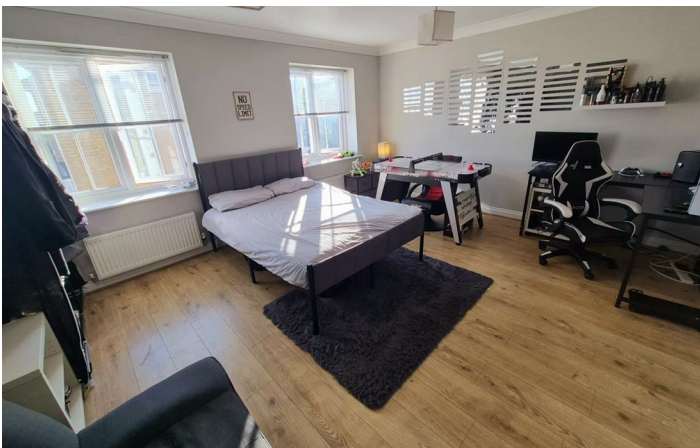
Bedroom Five

12'11" x 6'10" (3.95 x 2.1)

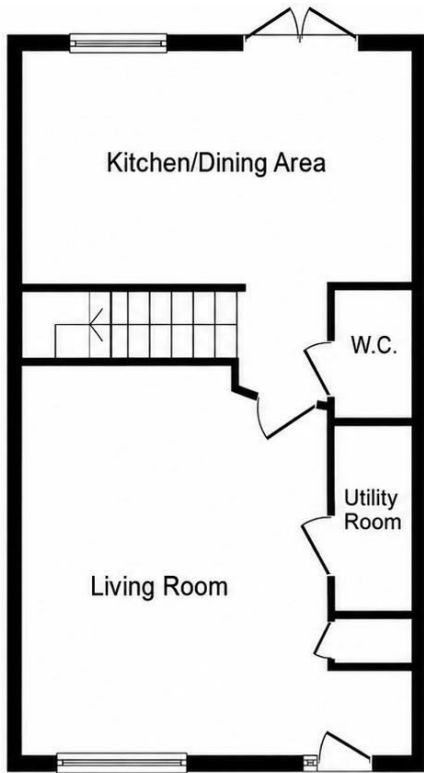


Directions

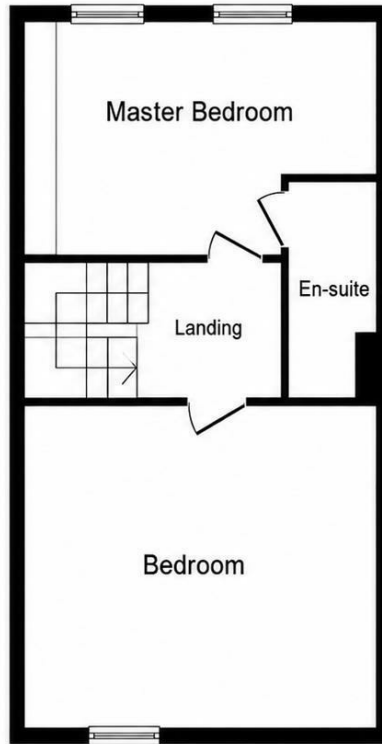




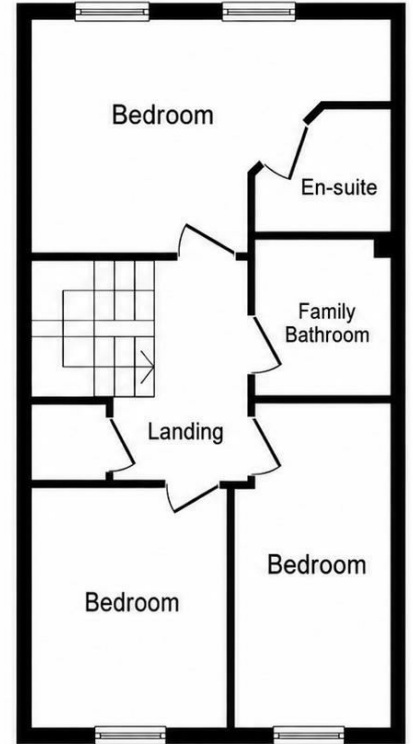
Floor Plan



Ground Floor

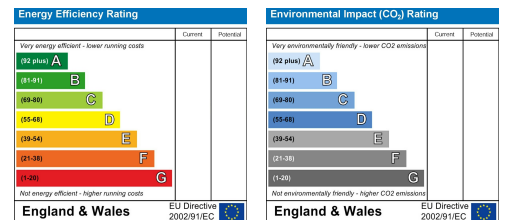


First Floor



Second Floor

These particulars, whilst believed to be accurate are set out as a general outline only for guidance and do not constitute any part of an offer or contract. Intending purchasers should not rely on them as statements of representation of fact, but must satisfy themselves by inspection or otherwise as to their accuracy. No person in this firm's employment has the authority to make or give any representation or warranty in respect of the property.



Estate agency done properly

Snow Gate™

Holmfirth 26 Victoria Street, West Yorkshire HD9 7DE
All Enquiries: 01484 680800

Mirfield 108 Huddersfield Road, West Yorkshire WF14 8AF
All Enquiries: 01924 497801

snowgate.co.uk